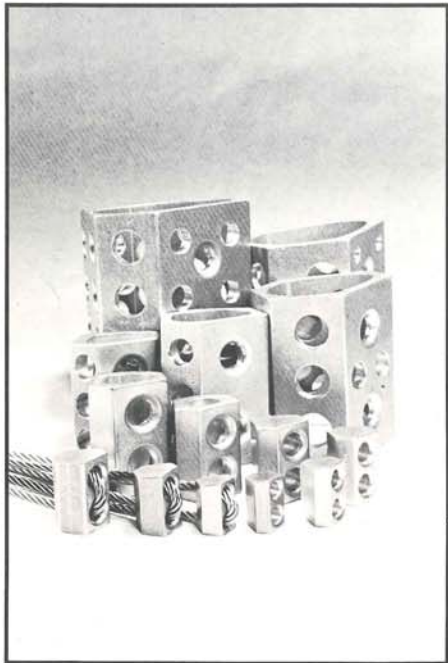




chouinard carabiner

Over the last 17 years the Chouinard Carabiner has gone through five major design changes. This last one was prompted by the pressures of inflation and dollar devaluations. But by changing from hot drop-forging the body to a new cold-forming process we not only saved money but produced a stronger, lighter, and more versatile carabiner. Its shape is slightly more oval than the 'D'/pear shape of the earlier Chouinard models, having been designed for an optimum combination of handling characteristics plus the high strength-to-weight ratio necessitated by modern clean climbing standards. The smooth bottom curve still minimizes shifting when two etrier 'biners are clipped in. The internal shape has been altered so that this carabiner works better than older models in carabiner brakes. Another advantage of the Chouinard Carabiner is the modified D shape which lets you know at a glance or by feel on which side the gate opens (a big plus on desperate 5.10's). The gate action is smooth and has the correct stiffness for safe, efficient climbing. The gate opens under body weight and allows plenty of room for two etrier 'biners and a fat 11 mm rope to be clipped in, (thus permitting the most efficient aid climbing sequence to be used—not to mention the convenience in setting up hanging belays, hauling, and rescue work). The stainless steel gate rivets are not just press-fitted, but securely peened over for reliability and extra strength when the gate is under a side load as in a carabiner brake. The gate latch opening is shaped so that under a load of over 200 lbs. the gate





hexentrics

Hexentrics excel in the smooth, relatively parallel-walled placements typical of Yosemite Valley granite, by virtue of their fine taper across opposing flats and ends, their camming action in offset placements, and their ability to fit bottoming placements. Because of their eccentricity, Hexentric chocks fit different sized cracks when cocked to the left or right. Turning the Hex one way (fig. 2) gives a long wedge profile with a moderate taper reminiscent of the Stopper plus a light torqueing action. This is the normally used setting. Tipping the Hex the opposite way, the short, thicker profile (fig. 3) torques hard and is dynamite for security in parallel cracks. This wide setting fits "half sized" cracks. Thus, if a crack is too wide for a No. 8 Hex in the narrower attitude, but is too narrow for a No. 9, use a No. 8 in the wider attitude and it becomes a size No. 8½! Adding the traditional space filler setting (fig. 4) so useful in suddenly constricting cracks, and the wide-spanning end taper (fig. 5) the

"schizophrenic" Hexentric offers four fitting possibilities. We now offer Hexentrics Nos. 1, 2, 3 with a swaged cable for those situations where securing the nut against added leverage is not a problem and

the extra strength of wire is desirable. Hexentrics # 8, 9, 10, 11 are now drilled with "lightening holes" to reduce weight. Hexentrics are available in sizes 1 through 11.

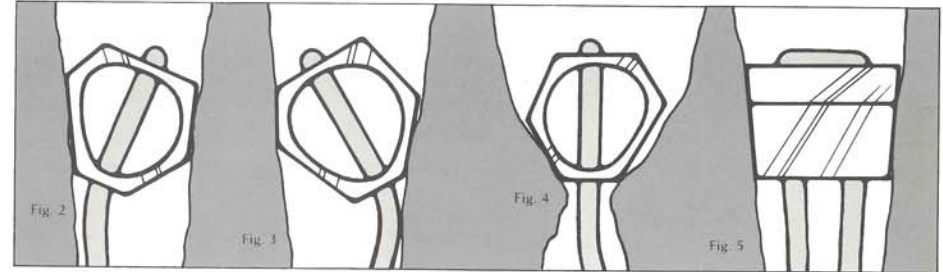


TABLE A. CHOUINARD HEXENTRICS

NUMBER	SMALL SIZE	LARGE SIZE	LENGTH	WEIGHT	WIRE SLING SIZE & APPROX. STRENGTH	ROPE SLING SIZE & STRENGTH	WEBBING SLING SIZE & APPROX. STRENGTH
Wired 1	7/16	1/2	1.4	2.2 oz	1/8 2600		
Wired 2	9/16	9/16	7/8	2.1 oz	1/8 2600		
Wired 3	5/8	11/16	1	2.4 oz	1/8 2600		
1	7/16	1/2	1.4	2.0z	5mm 1300 lb	1/2" 900	
2	9/16	9/16	7/8	1.0z	6mm 1500 lb	1/2" 900	
3	5/8	11/16	1	4.0z	7mm 1800 lb	9/16" 1700	
4	1/4	11/16	1.18	7.0z	8mm 2400 lb	9/16" 1900	
5	7/8	1	1.18	10.0z	8mm 2400 lb	1" Tub 3100	
6	1 1/8	1 1/4	1.58	14.0z	9mm 3500 lb	1" Tub 1500	
7	1 3/8	1 1/2	17.8	20.0z	9mm 3500 lb	1" Tub 1500	
8	1 5/8	1 3/4	2.14	10.0z	9mm 3500 lb	1" Tub 1500	
9	1 7/8	2	2.58	4.0.0z	9mm 3500 lb	1" Tub 1500	
10	2 1/4	2 1/8	1	6.0.0z	9mm 3500 lb	1" Tub 1200	
11	2 1/2	2 3/4	1.12	8.0.0z	9mm 3500 lb	1" Tub 1200	

TABLE B. CHOUINARD STOPPERS

NUMBER	SIZE	LENGTH	WEIGHT	WIRE SLING SIZE & APPROX. STRENGTH	SLING SIZE & APPROX. STRENGTH
1	1/8	3/8	3 oz	1/16 800 lb	
1 1/2	5/32	13/32	4 oz	1/16 800 lb	
2	3/16	7/16	6 oz	3/32 1700 lb	
2 1/2	7/32	15/32	9 oz	3/32 1700 lb	
3	1/4	1/2	1.2 oz	1/8 2900 lb	
3 1/2	5/16	9/16	1.6 oz	1/8 2900 lb	
4	3/8	5/8	2 oz	1/8 2900 lb	5mm 1300 lb
4 1/2	7/16	11/16	2.5 oz	1/8 2900 lb	6mm 1500 lb
5	1/2	3/4	1.5 oz	1/8 2900 lb	7mm 1700 lb
5 1/2	9/16	7/8	1.6 oz	1/8 2900 lb	7mm 1700 lb
6	5/8	1	1.8 oz	5/32 4000 lb	8mm 2400 lb
6 1/2	11/16	1 1/8	2.0 oz	5/32 4000 lb	8mm 2400 lb
7	3/4	1 1/4	1.2 oz		9mm 3100 lb
7 1/2	7/8	1 3/8	1.3 oz		9mm 3100 lb
8	1	1 1/2	1.4 oz		9mm 3100 lb
8 1/2	1 1/4	1 5/8	1.6 oz		9mm 3100 lb



chouinard frost piolet

The Chouinard/Frost ice axe is manufactured in Italy by Nicola Codega and Sons to our design specifications. The head is now drop-forged from a new high strength chrome-nickle steel and is ground, polished, and superbly finished. Also new is an extra set of teeth on the pick next to the shaft for climbing waterfalls where the ice is often thin and the pick can break through to water or air. These teeth will hold on the lip of the hole in the ice. As in the past, the pick is well drooped and curved (a Chouinard original) and has deep teeth in the end which allow the axe to be planted and used as a secure anchor. The adze has a fine cutting edge that cuts steps even in hard water ice.

We offer a choice of shafts - bamboo (UIAA strength of 230 kg) and rexilon, (18-laminates of wood) which has a strength of 260 kg. Rexilon is stronger than laminated bamboo but is slightly heavier. Both handles share similar handling characteristics: They are well-balanced, insulate against the cold, dampen vibration, and have grips that improve with use.

keathley ice axe sheath

Airlines used to demand you carry your ice axe on the plane with you. Now bells go off and they shriek with horror if you try to do that. But if you leave it strapped on to your pack it jams up the conveyor belt and punctures people's hat boxes.

Here is a simple and effective answer to all those problems—an ice axe sheath made of good quality leather with a durable snap. Weight: .3 oz.

In addition to strengthening the steel and the shaft we now attach the head with three rivets instead of two and use epoxy as a filler in the tang slots.

60 cm—for mixed climbs where the longer lengths would be difficult to carry. Weighs 1 lb. 12 oz.

70 cm—the perfect size for all serious ice climbing, the axe balances well in this length and it works better than the short axes on even extremely steep water ice. Weighs 1 lb. 14 oz.

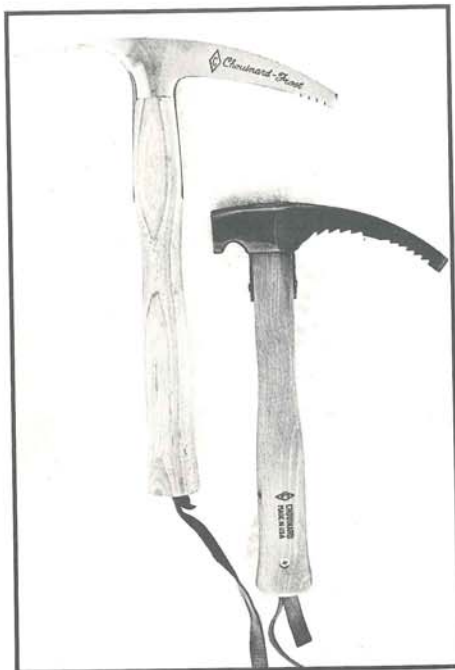
80 cm—for snow climbers over six feet tall, weighs 2 lbs.

Use

There is no single piece of climbing equipment that means as much to the alpinist as his ice axe. Even to the non-climber it is the symbol of mountaineering. The axe is the climber's most functional and most companionable tool. You may wish to soak or rub the shaft with a 50/50 mixture of linseed oil and turpentine to prevent water absorption. For winter climbing use pine tar to seal the wood and give a good base for rubbing on X-country wax. A violet wax on a cold day will give a superb grip for iced-over mittens. Paint on the tar and carefully heat the handle with a torch until the tar begins to bubble, then wipe off the excess.

Avoid prying boulders and striking crampons with the shaft. The

carabiner hole is solely a convenience for carrying the axe. It is not to be used for belaying; a shaft-boot belay is better. You can improvise a simple effective wrist loop by using 1/2" webbing and making a prusik knot around the handle or by just looping a 1/2" runner through the carabiner hole. When a lot of steps have to be cut in very steep ice where only one hand can be used, a wrist loop can be used effectively to transfer the strain from your fingers to the wrist. With the sling attached to the hole, coil it around the shaft until it is tight 'round your wrist when your hand is at the correct balance position on the shaft (fig. 23).



alpine hammer

The Alpine Hammer is good for cleaning moss and ice out of cracks, removing nuts, placing and removing ice pitons, and chopping steps at close quarters. However, its special design feature is its use as an ice dagger for hard water ice. For this purpose it has a long, narrow, drooped pick with teeth at the tip.

Over the years the Alpine Hammer has gone through four major design changes. This model has an added set of teeth on the pick next to the shaft for climbing waterfalls where the ice is often thin and the pick breaks through to water or air. The pick also has a bit more droop than before. It requires a subtle wrist action to place it without bashing your knuckles but you

climax

The ultimate technique on steepening ice, before resorting to artificial climbing or chopping steps, is front pointing with two Alpine Hammers or a hammer and a short axe. To avoid carrying two hammers we designed a mini-axe with the same pick as the Alpine Hammer but also with an adze for cutting "pigeon hole" steps in extremely steep ice or for clearing away verglas on rock climbs. This combination of axe and Alpine Hammer is perfect on near vertical ice. The Climax is so versatile that it can also replace the more cumbersome ice axe on some mixed climbs.

Weight: 1 lb.

gain by not having to swing as hard. The same holding power can be achieved with the pick driven less deeply into the ice. The hammer can also be removed more quickly in sticky ice, thus saving considerable time and energy.

We have removed some mass from the forward (Purlin) part of the head which improves the balance when swinging the hammer pick forward. Even though the head is now lighter, the penetration in hard ice is improved because the finer balance results in a truer swing. The change has helped to straighten out those glancing blows when swung by the weaker arm. We have also added 1-1/2" to the length of the handle. Weight: 1 lb., 4 oz.

USE

The Alpine hammer is now supplied with a shoulder loop that is not sewn but tied, so you can adjust it for your size and the amount of clothes you are wearing. Keep it adjusted tight around your armpits so it can't easily slip up over your head. This way when you are on "vertical" ice, ice 70-90 degrees, you can plant the pick well above you, using the hammer for a belay while you quickly chop a step for a belay platform or screw in a piton. Keep the cord from the shoulder loop to the hammer as short as possible to avoid its getting in the way. It is the proper length when it just reaches to the opposite outstretched hand.

For extended vertical climbing, you may want to put on a hand strap to relieve the strain from gripping the handle. Use 1/2" webbing and half-hitch it around the throat of the handle. Etriers can be similarly attached: Figure 24.

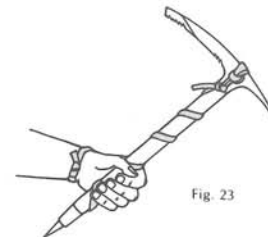


Fig. 23

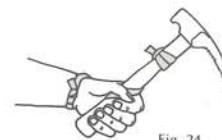


Fig. 24



salewa skis

Salewa's new model Galcier skis were designed for spring-and-summer, corn-and-ice skiing. In the mornings it is easiest to climb simply by walking or kicking steps on the crust. Short skis are lashed conveniently out of the way on the pack. But around noon the bottom drops out when walking and a little bit of ski is all you need to stay on top of it, going either up or down.

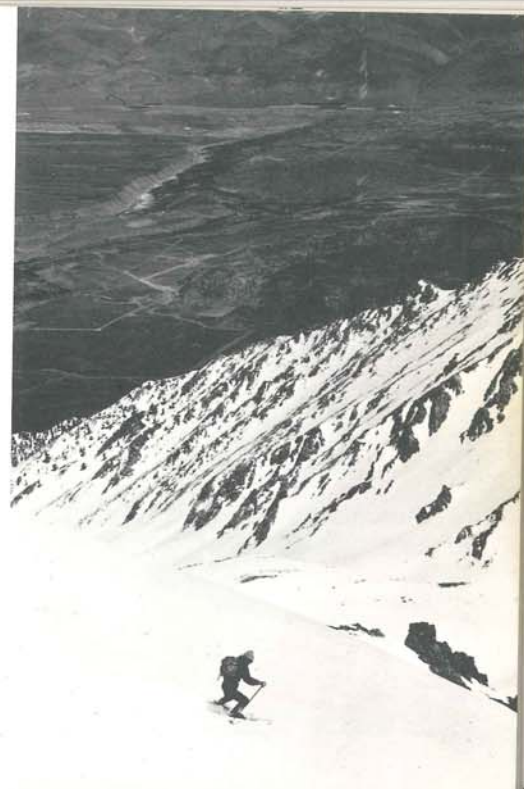
These are mountaineering skis—they should not be confused with the popular shortie skis that are available on the downhill market today. This new model wood and plastic ski weighs a 1/2 pound less than Salewa's all-wood older ski. Because of the width (they are the widest short ski available), steel edges and extreme light weight, they are superb for year 'round mountaineering on snow. Ideal for Mt. Rainier in May or June or expedition use in Alaska, they readily take the place of snow shoes, being more versatile and not nearly so clumsy.

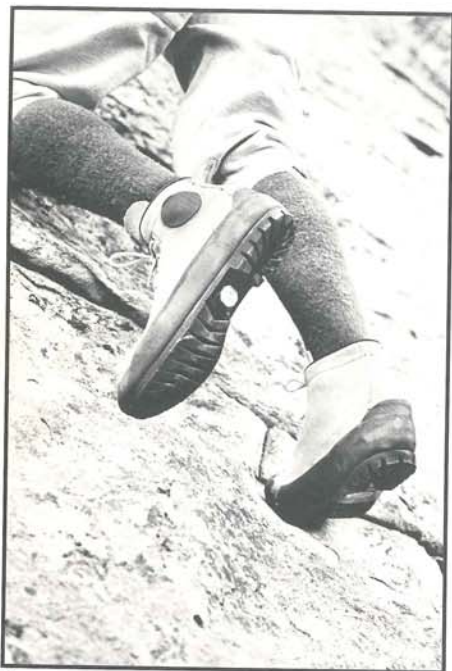
We have used them with waxes to cross the Sierra and encountered no problems keeping the wax on. However, we do sell them only with skins because of the great practicality in mountaineering. Put on the skins and climb straight up for four thousand feet to your climb, then shed the skins and scream down through all the crud. If you are lucky enough to find some powder along the way, these skis work all the better. You can also escape the madding crowd in downhill ski areas by disappearing across the Sierra

cement through the Aspens. Salewa skis allow any intermediate skier to enjoy the weightlessness of three-dimensional skiing through any kind of powder, hail or cornsnow.

silveretta bindings

This is a hinged-touring binding which will fit most mountaineering boots. The Saas Fee has a steel plate under the foot which gives enough lateral stability so that you rarely bother to lock down the heels for downhill skiing. The Saas Fee has a cable front release. Weight per pair: 3 lb., 8 oz.

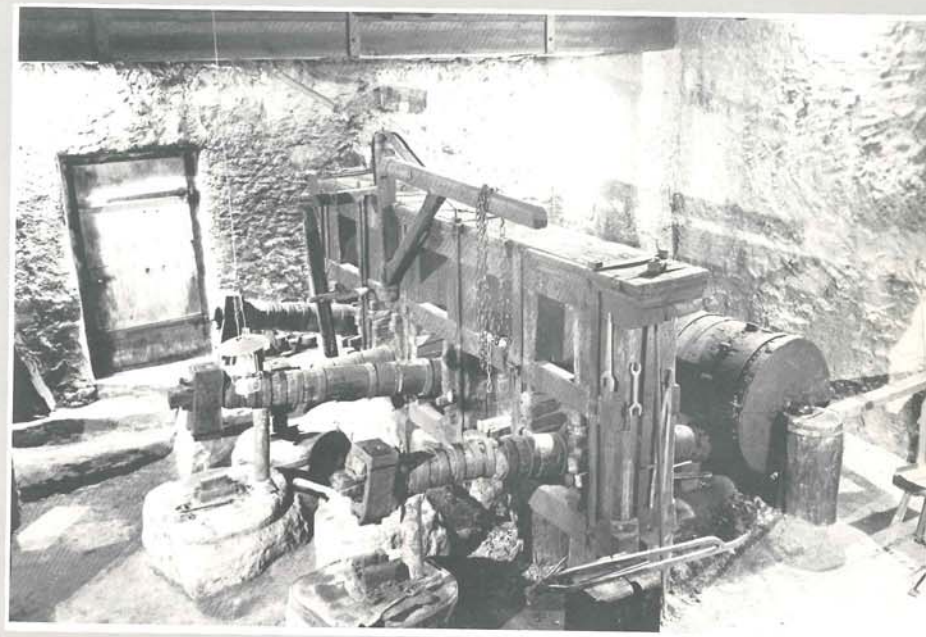




shoenards (VASQUE ASCENDER II'S)

Seven years ago we started working on a new rock climbing shoe. We wanted to be able to jam, edge, friction "smear" and run painlessly through the trees without taking along half a shoe store to do everything well and comfortably. These "Shoenards" are the result.

First we started with the last. We chose an ice-skating last to give the close fitting support needed in a rock shoe. We hand-carved away and built up the toe, heel and ball area to provide street shoe comfort. For jamming, we designed a thin toe and a ring of rubber around the whole shoe; even put a rubber patch on the ankle bone for off-width cracks. (We put in a plastic midsole that is thicker under the heel and arch for standing in etriers and for torsional rigidity when edging on the sides.) The plastic extends all the way to the edge of the sole to give a solid base to prevent the sole rubber from creeping. This plastic midsole tapers from the ball to the toe for flex in friction climbing and for the thinnest possible profile in narrow jamcracks. The flex will last the life of the shoe. The sole outline is the narrowest of any Klettershoe or P.A. yet a comfortable fit is possible even with double E feet. Around the edges the sole is solid rubber to provide maximum friction contact with the rock. Crosswise slots open the center of the sole into a pattern that protects against the ball-bearing effect on sandy slabs. The low heel is of great advantage in running down pine needle slopes or in crossing the occasional snow patch. The uppers are all leather for long life and a lasted fit. They are resoleable. Unlike most rock climbing shoes that need to be skin tight to be effective, we recommend you get a snug but comfortable fit. Available in sizes 5 to 12, in half sizes and two widths. Send your street shoe size and foot outline with socks on.



Old Stubai workshop in Austria



In ancient times when early navigators feared sailing off the edge of the world, maps labelled the territory beyond the edge of exploration the

ultima thule

The Ultima Thule is a climbing, ski touring and wilderness backpack. It is not a pack that everyone needs. The popular hip suspension packs will do on manicured low-gradient park system trails — but in rough country the rigid frame pack is as appropriate as wing-tipped oxfords on a lava flow.

The Thule has no interior or exterior frame. The weight is distributed evenly between the wearer's back and hips and follows the body's movement. The pack's shape and fit allows you to be in balance while skiing, climbing or talus running — it creates no equilibrium or momentum of its own.

The Thule provides easier packing and an even better fit than previous models. The new shoulder strap system allows one size Thule to fit most everyone from small to extra large. A harness attached to the shoulder straps allows the wearer to shift weight distribution according to comfort — from an even distribution to greater stress on the top or front of the shoulders or to the hips or the back. After a few hours of carrying a heavy load, shifting the weight to different muscles can relieve cramps and soreness. The Cordura nylon on the back and dowlaps provides friction which helps to transfer the load over the whole back and hips.

The Thule eliminates the horizontal bottom compartment of previous models to accommodate bulky synthetic sleeping bags. The entire pack is divided into two long compartments by a zippered divider that can be partially or totally unzipped to make more space for large items. Horizontal zippers across the front and into the dowlaps allows access to deeply packed belongings.

The dowlaps and back are foam padded to prevent awkwardly packed objects from invading your hips and ribs. The Ultima Thule has a unity with the body that frames can only imitate. Detachable side pockets with a volume of 500 cubic inches are available. Blue. Capacity: 3750 cubic inches.

Weight: 3 lbs., 2 oz.

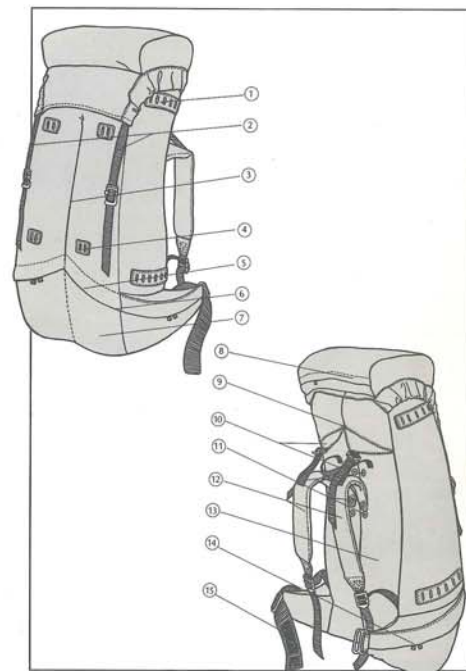
NOTE ON PACKING THE ULTIMA THULE

When balance is important heavy gear should be packed low. Keep very heavy items like hardware or tin cans as close to the back as possible. Stuff the dowlaps from the outside with socks, gloves, extra shirts, etc. The dowlaps are accessible while the pack is being worn—they're good places to carry small items like sun cream, lip balm, etc. Although the pack material is waterproof, rain can leak through the seams: we advise that you seal the seams with Chouinard Rainpaint and keep your down items in waterproof polybags.

ULTIMA THULE POCKETS

These strap-on pockets add 500 cubic inches of capacity to the Thule. Each pocket has two zippered compartments to file away items like water bottles, a camera, first aid kit, or anything you want to keep readily accessible. Pockets are attached by strapping on to the three leather side patches.

1. Four accessory patches of latigo leather on the sides of the pack adjust to fit various widths of skis, or can be used to carry a tent, rope or foam pad. Generous (but optional) pockets can be secured here to provide access to gear your need.
2. Two sturdy straps and buckles secure the top flap so that a rope, tent, or extra clothing can be safely carried under and across the flap.
3. Vertical partition forms two compartments which maintain the pack's shape without a frame. Partition can be unzipped to accommodate bulky loads.
4. Four leather accessory patches for holding crampons, ice axe, extra rope, sweater, etc.
5. A heavy #9 melted coil zipper is protected from the elements by a "western cut" storm flap.
6. Zippers across the lower portion of the pack provide access to deeply packed belongings.
7. The Thule will accommodate any size sleeping bag, including synthetics.
8. Top pocket accommodates maps, compass, gloves, water bottle etc. and is accessible while wearing the pack.
9. All stress points are double or triple stitched.
10. Shoulder strap harness system allows you to divide the load between the shoulders, back and hips, or concentrate the load on a given area, according to comfort.
11. Four shoulder straps placements so that one size fits all.
12. Luxuriously padded shoulder straps.
13. Cordura nylon back to provide friction.
14. Dowlap pockets accessible while on the move.
15. Adjustable quick release velcro waistband.





creag dubh

Creag Dubh (pronounced craig du) means black crag in Gallic. This is what this pack is made for — crag climbing. It is built much the same as the Teardrop but larger (1600 cubic inches). Also there is a removable sponge pad in the back that keeps your long dong and ice screws from reminding you they're there. Seven leather accessory patches provide attachments for ice axe, crampons, foam pad or sleeping bag. The capacity of the CREAG DUBH is ample enough for weekend trips, bivouac climbs or for use as a small person's backpack. A storm flap over the heavy-duty coil zipper will keep everything but your spirits from being dampened in the rain. The material used is 19 oz. navy blue Parapack or 11 oz. Cordura nylon in blue, green or orange (not all colors are always available).

Weight: 1 lb., 9 oz.

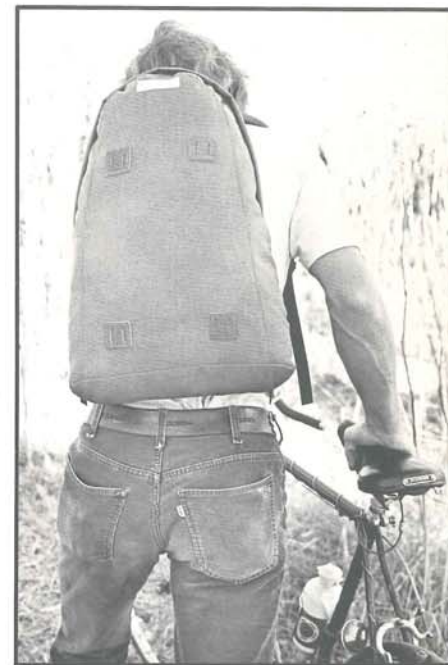
teardrop

The classic teardrop shape has proven to be the most practical design for small day packs. Our version is shaped simply — without restricting compartments and pockets and is built like a battleship. Having only one large compartment with a volume of 1200 cubic inches makes it practical for carrying a rope and hardware, tennis rackets, books, a bottle of wine or whatever. The TEARDROP also features soft, closed-cell sponge shoulder straps, a waistbelt, latigo leather accessory straps and double stitching throughout using heavy nylon thread. Available in either 19 oz. Parapack nylon or 11 oz. Cordura nylon in blue, green or orange. (Not all colors are always available.)

Weight: 1 lb., 3 oz.

chouinard accessory straps

All the Chouinard packs are built with lots of attachments for carrying awkward shaped items like ice axes, crampons and foam pads on the outside of the packs. These nylon accessory straps are made exclusively for us and they feature a stainless steel buckle that gives a non-slip grip on the sturdy strap. Packed two per package. Sizes 20, 30, 39 inches.





foamback rain gear

The foamback material used in our cagoule, anorak, and rainpants utilizes a super-K coated nylon taffeta with a thin layer of bonded foam and a lining of nylon tricot. The foam and tricot layer acts as insulation between the hot air inside and cold air outside, thus minimizing condensation and allowing the use of a waterproof shell. This material has been fully tested in torrential Alaskan rains, blizzard conditions in the San Juans and 100 mph Patagonian winds.

rainpaint

There is no cagoule, pack or bivouac sack that is absolutely waterproof under a torrential rain unless the seams have been sealed. We advise that you seal the inside seams of all the foamback gear or bivouac sac, using two or three coats.

Net Weight: 4 oz. in a can with brush applicator.

cagoule

The Foamback Cagoule is cut full to allow you to pull the skirt over the knees during a rainstorm or a bivouac. The sophisticated hood design provides protection, freedom of movement and allows full visibility. A short bill over the front diverts the rain over to the side. A zipper on the cowl provides ventilation around the neck area on warm but wet days. The cuffs are adjustable by velcro closure. A large kangaroo chest pocket is not only convenient but also provides some ventilation. Available in sizes extra small through extra large. Blue or yellow.

Weight: 18 oz.

anorak

The Foamback Anorak is a shorter, closer fitting version of the cagoule, which makes it superb for climbing. It is wind and waterproof when the seams are sealed. The Anorak offers adjustable velcro closure cuffs, a kangaroo pocket and zipper at the neck for ventilation. The combination of the anorak and rainpants gives the protection and mobility needed to climb right on through the storms. Blue or yellow. Available in sizes extra small through extra large.

Weight: 14 oz.

rainpants

The Chouinard Foamback Rainpants are waterproof overpants which can be put on without removing your boots. Snaps along the lower leg provide for width adjustment. Two pocket slots allow ventilation and access to the pants pockets. Rainpants are secured around the waist by a draw cord. Blue or yellow.

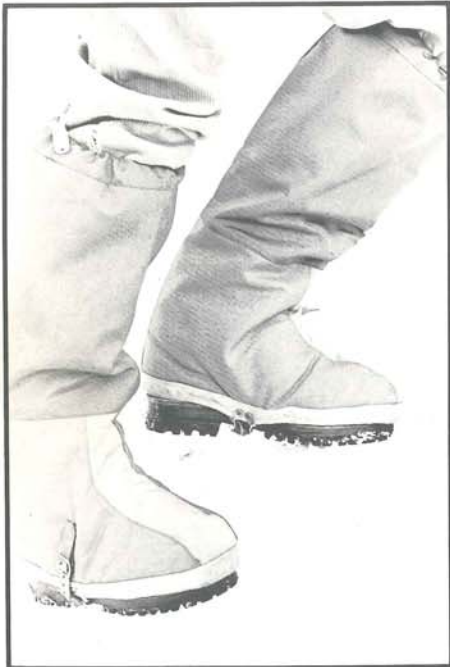
Small — waist 26 - 29 x 26" inseam
 Med. — waist 30 - 33 x 27½" inseam
 Large — waist 34 - 36 x 28½" inseam
 X Large — waist 36 - 38 x 29½" inseam

mountain jacket

Our Mountain Jacket differs from the anorak by having a full length zipper for ventilation and convenience. The body is cut large enough to fit over bulky sweaters or down jackets. The three piece hood offers protection without sacrificing visibility. Four ample front pockets with velcro closures are practical for the mountains and snazzy enough for high society soires. Blue or yellow. Sizes extra small through extra large.

Weight: 20 oz.





supergators

We have used Peter Carman Supergators for several years in all sorts of winter conditions, from the searing cold of Mount Washington to the peat bogs of Scotland. Never did we need double boots and never did we get our feet wet. Unlike other gaitors, these cover the boot uppers right down to the welt. A unique wire cable system around the welt cinches the gators securely to the boots, leaving the soles free for climbing. A zipper down the back allows them to be put on without taking off the boots.

Supergators are lined with wool/rayon felt and are made of waterproof nylon in the foot area and breathable nylon in the uppers. Supergator sizing is by the maximum boot circumference just above the welt. Available in sizes 27, 28, 29, 30, 31. Weight: 1 lb., 5 oz.

neoprene straps

When the neoprene bottom straps wear out they should be replaced. Replacements come in pairs complete with attachments and rivets.

watergators

The new year brings on a new gator designed by Peter Carman. Watergators do not add warmth to the feet, but they do keep water and snow out of boots, and they do have several advantages over other conventional gaitors. Condensation is kept minimal by the waterproof bottom and uncoated pack-nylon top. The hooks used are made of stainless steel. A system of flaps and snaps protects the zipper from freezing and keeps water and snow out. The drawstring and toggle clamp are found inside the Watergator and do not interfere with movement.





gpiw/whillans sit harness

The basic design for the GPIW model of the Whillans Sit Harness was developed by Don Whillans, in conjunction with Troll Products, as an aid to prusiking at high altitude on the South Face of Annapurna. The harness underwent subsequent development and the GPIW model was derived to meet the specific requirements of American climbers for a cleaner harness. The GPIW model provides greater security than the Swami Belt for falling, taking tension, and hanging belays. The harness is a comfortable seat sling for prusiking, rappelling, and doing pendulums. A hammer holster can be carried on the right side and the equipment loops are preferable to the normal hardware sling for carrying chocks and nuts. The harness is loose fitting while walking or climbing, but for actual use an upward tension on the rope will snug the harness comfortably up under the thighs and buttocks.

Prototypes and components of the Whillans Harness have been subjected to a number of tests including the following:

- numerous falls 10-15 feet in height
- buckling systems minimum slip is in excess of 4000 lbs.
- minimum strength of webbing which could be subjected to full force is in excess of 5000 lbs.
- stitching is always stronger than the webbing in a pure tension situation.

For long term use it must be remembered that age, abrasion, and general use cause a deterioration in strength which occurs at an undetermined rate. Therefore, like climbing ropes and nylon slings, the harness should be inspected regularly and retired when necessary.

Available in waist sizes 28, 30, 32, 34, and 36.



chouinard hardware sling

Our Hardware Sling is made of 2" nylon webbing, the lower half of which is rolled into a slender diameter to cleanly accept carabiners. The wide width and soft edges allow you to more comfortably carry heavy racks on big climbs. Selection of sizes ranges from small for short persons to the larger sizes for use over sweaters and down jackets. A tight fit is recommended to keep hardware from hanging low and swinging. For instance a person who normally wears a medium shirt should wear an extra-small sling for normal rock climbing in a light shirt.

XS = 41"; S = 44"; M = 47"; L = 50"; XL = 53".

robbins belay seat

This is the original Royal Robbins design—the climber's companion on long artificial routes. It is constructed of red ripstop and flat webbing. The belay seat is compact enough to fit in the back pocket. The size is 12x28. Weight: 2½ oz.





chouinard peapod hammock

The Chouinard Peapod Hammock is a two-point suspension hammock designed to eliminate the squashed shoulders normally suffered during hanging bivouacs. The fabric is a green nylon reinforced at all stress points. Although an amenity high on smooth walls, the peapod is considered essential in the campground. Weight: 8 oz.



chouinard bivouac sac

The bivouac sack has traditionally been used as survival shelter in Europe. Its extreme light weight for the amount of protection provided makes it extremely valuable for bivouacs on technical climbs and for backpackers desiring to travel light with minimal protection. Although frequently uncomfortable because of condensed moisture, the bivouac sack ensures survival because of the increased warmth its impermeable construction provides.

We have developed our own one- and two-man models having unique top closures which keep out rain and snow while allowing exhaled moisture to escape from the interior of the sac. The Chouinard Bivouac sacks are constructed of blue 2.3-oz. ripstop coated with 1 oz. urethane. One-man: 90"x30". 11 oz.; two-man: 90"x54", 20 oz.

cord knickers

Knickers used to be baggy, and used to serve their purpose by covering the legs yet allowing maximum freedom of movement. But the fashion-freak skiers got hold of the idea and knickers have since become high-water pants useful only for bar hopping. Our Cord Knickers are super baggy and come in two generous lengths so that they can be let down to the ankles for cold bivouacs or for crashing through manzanita and devil's club. We have found the corduroy cloth to be so durable that we have done away with the double seat and knees that we used to have. This not only saves material, labor, and weight but it does away with the "load in your pants" feeling they used to have. Although their labels recommend dry cleaning, these knickers are machine washable with only slight shrinkage. Available in two inseam lengths: 23" or 27". Waist sizes 28, 30, 32, 34 and 36.

wool knickers

These knickers are the same design as the corduroy. The fabric is a heavy Scottish recycled wool (from old Harris tweed game keeper's coats?). The material is extremely tough, durable, and water repellent. It is machine washable and shrinks 5%. Made in Scotland. Available in two inseam lengths: 23" or 27". Waist sizes 28, 30, 32, 34, 36.





sailor shirts

French sailors have been wearing these shirts for hundreds of years and our version is faithful to the classic design. We use long staple Egyptian cotton for strength and machine washability. The cotton is

84

made into a 10-count yarn in a rib knit to give the shirt the proper weight. We offer the shirt in the standard boatneck and in a turtleneck for the mountains. Colors: white and blue stripes, white and red stripes, red and blue stripes. Available in sizes XS, S, M, L, XL.

chouinard climbing pants

We crossed a Mack truck with a pair of cowboy chaps to come up with the toughest, most functional rock climbing pants ever made. The legs are cut wide for freedom of movement, for durability and comfort in chimneys, the front of the pants are doubled from the waist to below the knees. The seat is also doubled and has generous enough pockets to accommodate caps, etriers or pint bottles of Jack Daniels. Material is 12 oz. cotton duck sewn with thick polyester thread, bartacked and double stitched at all stress points. Color: straw. Available unhemmed in waist sizes 28, 30, 32, 34, 36, 38.

walking shorts

This is the classic walking short worn in the hot, humid colonies by policemen, petty officers and just about everyone else with any sense. The legs are really cut wide to provide ventilation and to give that characteristic flair. They have two deep front pockets and one wallet size slit pocket in the back. Made of sturdy cotton Kakhi. Color: tan. Available in sizes 28, 30, 32, 34, 36, 38.

stand up shorts

Free climbing in shorts on warm sunny rock is the ultimate in freedom of movement and these Stand Up Shorts are made specifically to allow this freedom. They are not collegiate cut bermudas or jive safaris; these are climbing shorts. The legs are short and cut wide for those far-out moves. The material is either 10 oz. denim or 12 oz. cotton duck. They are sewn with heavy nylon thread and all the stress points are reinforced. The shorts have a durable double seat, thus creating two very large pockets with added durability. Machine washable. No shrinkage (pre-washed). Waist sizes 28, 30, 32, 34, 36, 38. Colors: blue denim or faded cotton duck (straw).

cord shorts

These pre-space age shorts are made from the world's toughest cotton corduroy which we buy from a 19th century mill in Lancashire. They have the same cut as the Stand Ups but have two slit pockets in the back instead of the double seat. Sizes 28, 30, 32, 34, 36, 38. Color: tan. Machine washable with 5% shrinkage.

g.p.i.w. t-shirts

100% Cotton T-shirts with the wave on the back and a pocket in the front. Available in light blue, navy blue, tan or yellow, in sizes S, M, L, XL.



85



dachstein mitts

Dachstein Mitts are used on all the big winter ascents in the Alps. Constructed of closely knitted and shrunken unprocessed wool with all its natural oils, Dachstein Mitts are nearly waterproof. An ideal combination for mixed climbing is to wear Millarmitts inside the standard weight Dachsteins. Manufactured in two weights, standard and thick in sizes S, M, L.

walker woolies

The Walker Wool Glove is a hot tip. Made of 100% shrunken wool that has its natural oils, Walker woolies are comparable to the Dachstein Mitts in overall quality and weight, and allow a degree of dexterity unobtainable from the mittens. Available in M and L.

millarmitts

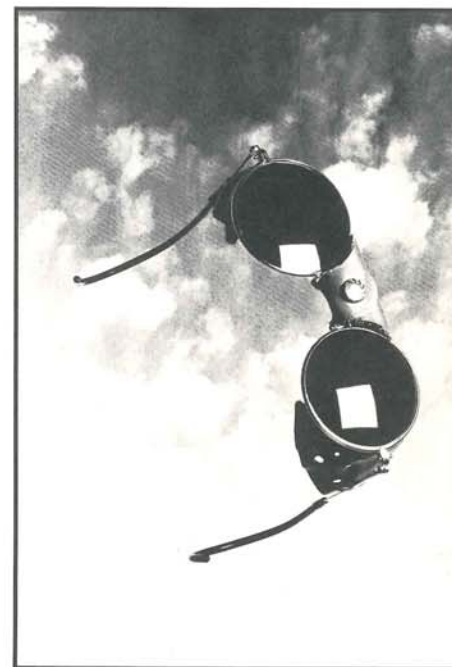
Millarmitts are fingerless gloves with silicone-treated wool backs and slip resistant cotton palms. English ladies hand-knit them in their own homes. They are a must for the north wall climber and for winter steelhead fishing. Available in sizes S, M, L.

mountain spectacles

Mountain Spectacles have a sturdy lightweight frame with leather side shields and protective hard-resin lenses. The lenses absorb 85% of visible light, 82% of infrared light, and 100% of harmful ultra-violet light (at 356 mu). The plastic lens is four times less prone to fogging and condensation than a glass lens. The six degree curve in the lens does not distort depth perception as do flat lenses. The lenses are shaded dark brown to minimize color distortion. The round shape is tasteful and makes you look like a large fly. A hard protective case is included and replacement lenses are available.

PRESCRIPTION MOUNTAIN SPECTACLES

Send us your distance spectacle prescription and we will have our optometrist grind Mountain Spectacle lenses to specifications. Allow one month for delivery.



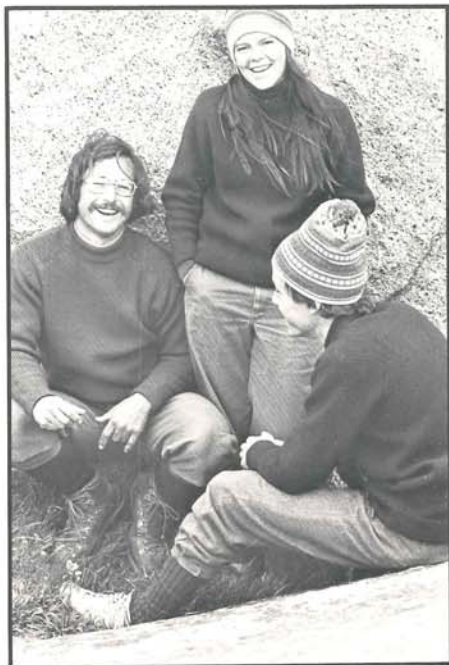
chamonix guide sweater

Our 100% wool sweater is styled after the classic French ski and mountain guide design. The soft, heavy weave is tightly knit throughout the sweater; the seams are knitted together rather than sewn. The Guide sweater features a crew neck and raglan sleeves, and is useful for the winter streets as well as the mountains.

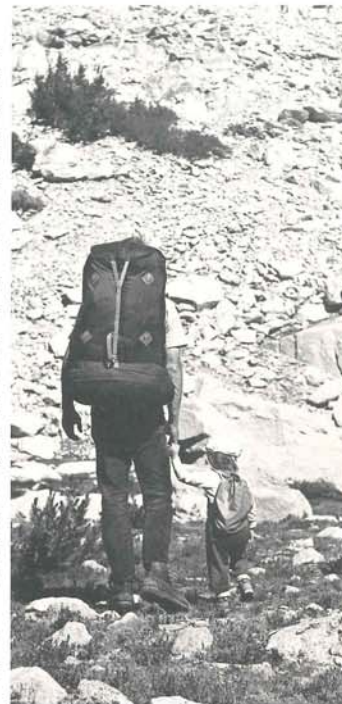
Available in XS, S, M, L, and XL sizes.

Colors are navy blue, forest green and rust. Color swatches for the dubious are available upon request.

Weight: 1 kilo

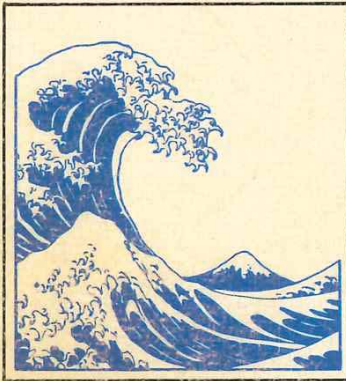


*He
climbed
and
he
climbed
and
he
climbed,
and
as
he
climbed
he
sang
a
little
song
to
himself.
—Winnie-
the-pooh*




mail order instructions

1. Please use order form provided; another one will be returned with your order.
2. State name and address (including zip) legibly; this is your mailing label.
3. Adequately state size, color, number of items desired; enclose hand and foot outline for gloves and boots or shoes.
4. Enclose check or money order in U.S. \$.
5. If using a BankAmericard or Master Charge card:
 - a) include your account number; b) include the four-digit number above your name; c) include the expiration date.Items not in stock but expected within two weeks will be placed on backorder. Backordered items will be charged to your account when they are shipped.
6. We pay surface postage to destinations within the U.S.A.; please include appropriate additional fees for air mail, special handling, special delivery, or foreign postage, as indicated on the order form.
7. Because of the rise in shipping costs, we have added an additional 50 cents service charge on all orders.
8. We will accept COD orders by phone only. There is a \$1.00 service charge. No collect phone calls please.
9. California residents please add 6% sales tax.
10. Refunds of more than \$1.00 will be sent by check; less than \$1.00 will be in the form of a credit memo toward future purchases.
11. Items temporarily out of stock will be held on backorder if delivery is expected within two weeks; otherwise they will be cancelled. Please state if you wish to be held on backorder for a longer time for a particular item.



THE GREAT PACIFIC IRON WORKS

Manufacturers and Distributors of

chouinard equipment 

P.O. BOX 150, VENTURA, CALIFORNIA 93001

BULK RATE
U. S. POSTAGE PAID
Permit No. 33
Ventura, Ca. 93001

Address Correction Requested
Return Postage Guaranteed